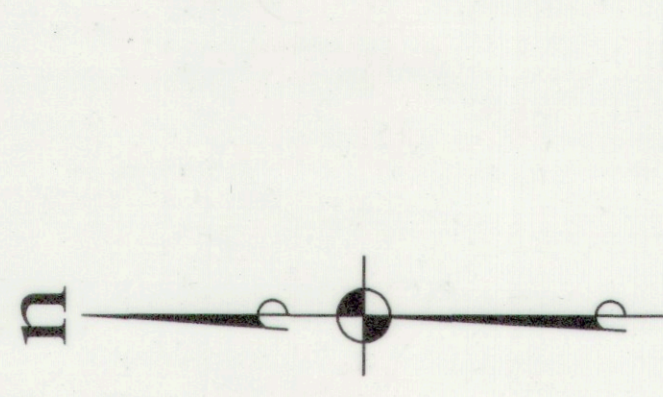


**THE LEGACY AT SUNCADIA
SUNCADIA - PHASE 1 DIVISION 6**

A PORTION OF SECTIONS 19 AND 20, TOWNSHIP 20 NORTH, RANGE 15 EAST, W.M.
KITITITAS COUNTY, WASHINGTON

AUDITOR'S REFERENCE

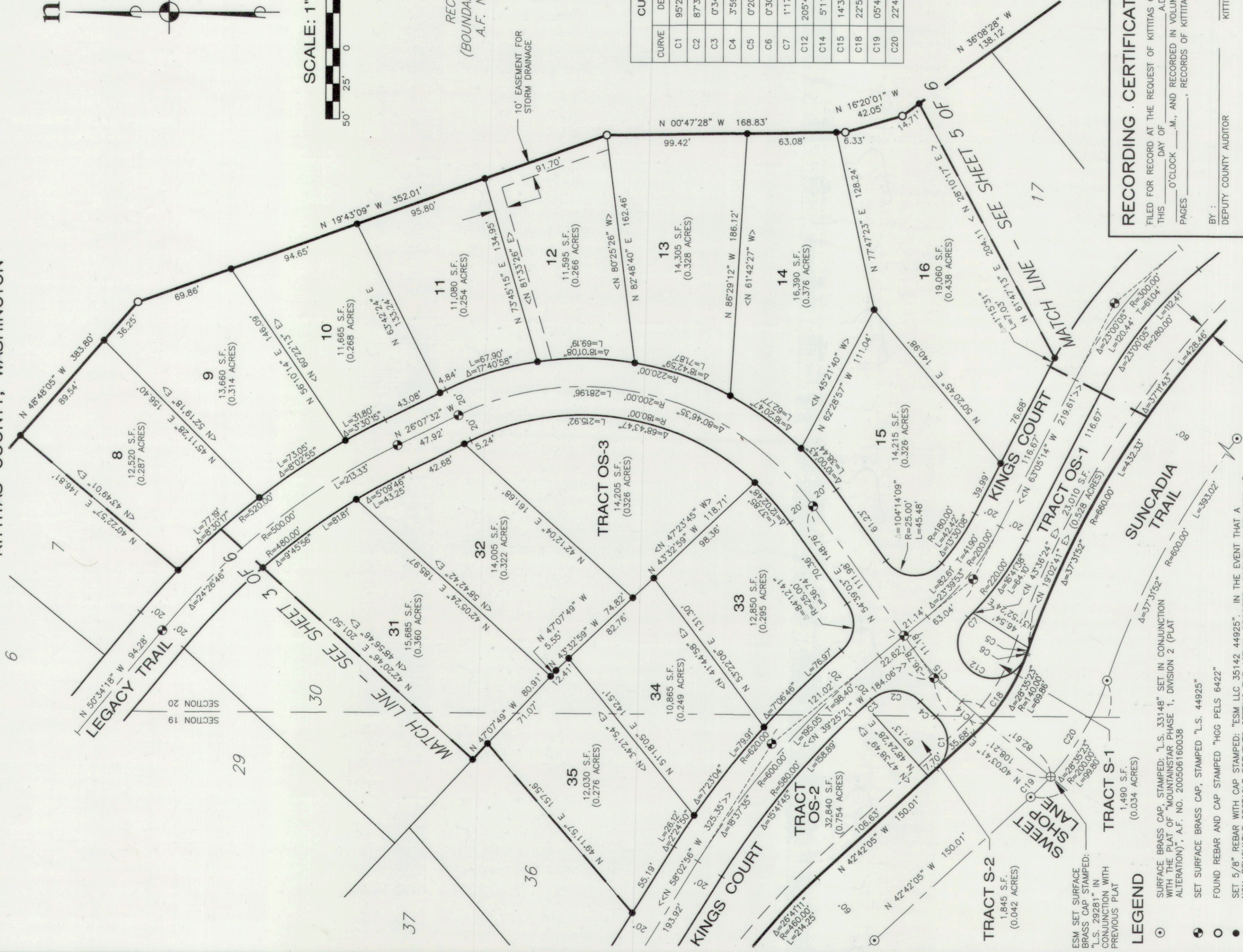


SCALE: 1" = 50'

TRACT B

RECORD OF SURVEY
(BOUNDARY LINE ADJUSTMENT)
A.F. NO. 201704180025

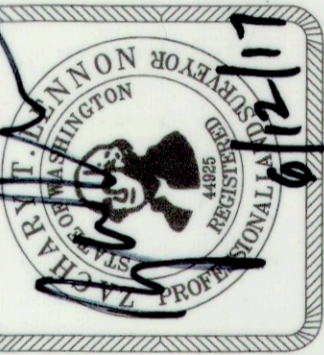
CURVE	DELTA	RADIUS	LENGTH
C1	95°25'40"	25.00	41.64
C2	87°39'02"	25.00	38.24
C3	0°34'16"	580.00	5.78
C4	3°59'52"	220.00	15.35
C5	0°20'09"	660.00	3.87
C6	0°30'40"	140.00	1.25
C7	1°17'16"	220.00	4.94
C12	205°40'28"	25.00	89.74
C14	5°11'26"	140.00	12.68
C15	14°35'22"	200.00	50.93
C18	22°53'17"	140.00	55.93
C19	05°48'17"	200.00	20.26
C20	22°47'06"	200.00	79.54



RECORDING CERTIFICATE

FILED FOR RECORD AT THE REQUEST OF KITITITAS COUNTY BOARD OF COMMISSIONERS,
THIS _____ DAY OF _____ A.D., 2017, AT _____ MINUTES PAST
_____ O'CLOCK _____ M., AND RECORDED IN VOLUME _____ OF PLATS, ON
PAGES _____, RECORDS OF KITITITAS COUNTY, WASHINGTON.

BY: _____ DEPUTY COUNTY AUDITOR
KITITITAS COUNTY AUDITOR
AUDITOR'S REFERENCE: _____



ESM CONSULTING ENGINEERS LLC
33400 8th Ave, S #205
Federal Way, WA 98003
www.esmcivil.com
Civil Engineering | Land Surveying | Project Management | Land Planning
Public Works | Landscape Architecture

DATE: 2017-06-09
DRAWN BY: C.A.F./R.F.G.
JOB NO. 998-753-016-0002
SHEET 4 OF 6

- ESM SET SURFACE BRASS CAP STAMPED:
"L.S. 33148" SET IN CONJUNCTION WITH PREVIOUS PLAT
- LEGEND**
- ⊙ SURFACE BRASS CAP, STAMPED "L.S. 33148" SET IN CONJUNCTION WITH THE PLAT OF "MOUNTAINSTAR PHASE 1, DIVISION 2 (PLAT ALTERATION)", A.F. NO. 200506160038
 - ⊙ SET SURFACE BRASS CAP, STAMPED "L.S. 44925"
 - FOUND REBAR AND CAP STAMPED "HGG PELS 6422"
 - SET 5/8" REBAR WITH CAP STAMPED "ESM LLC 35142 44925". IN THE EVENT THAT A NON-REMOVABLE OBSTACLE PREVENTS SETTING THE ACTUAL PROPERTY CORNER, A STAMPED 2" ALUMINUM CAP WILL BE SET ON THE PROPERTY LINE AS AN OFFSET TO THE ACTUAL CORNER WITH THE DISTANCE TO THE ACTUAL CORNER NOTED THEREON.
 - Δ DELTA
 - R RADIUS
 - L ARC LENGTH
 - (R) RADIAL BEARING
 - < > RADIAL BEARING AT LOT CORNER
 - OS-1 OPEN SPACE TRACT - DESIGNATION NUMBER
 - S-1 SERVICE TRACT - DESIGNATION NUMBER
 - AC-1 ACCESS TRACT - DESIGNATION NUMBER
 - << >> DISTANCE MONUMENT TO MONUMENT

10' EASEMENT FOR POWER AND GAS GRANTED BY A.F. NO. 201001270024 AND FOR STORM DRAINAGE AND UTILITIES GRANTED BY A.F. NO. 200704300030 AND FOR UTILITIES GRANTED BY A.F. NO. 200505040001